



25/11/2021





Foto 5 – Parti comuni

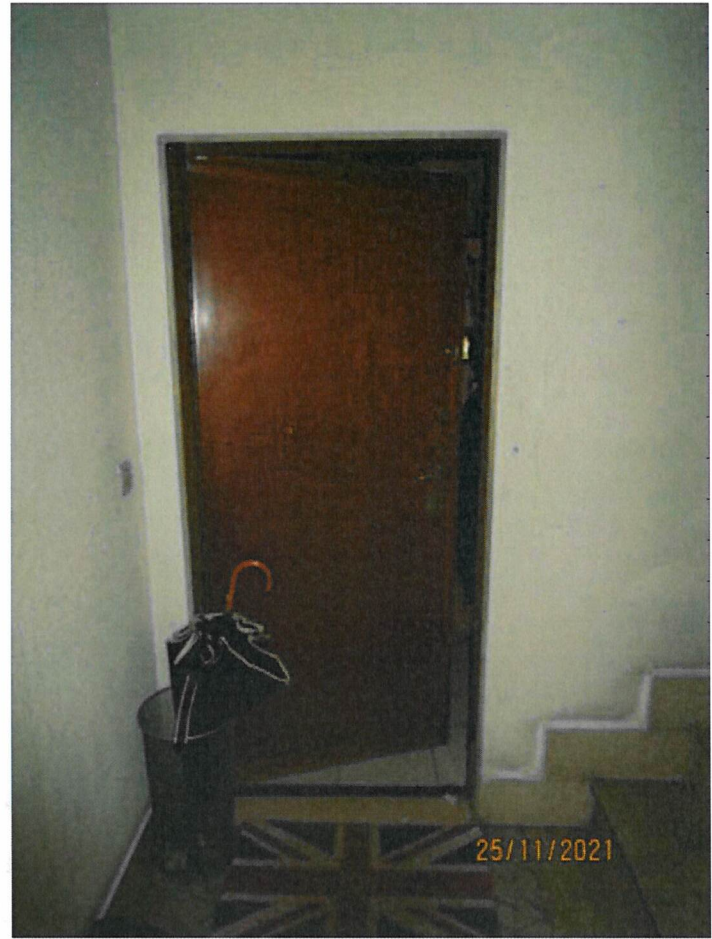


Foto 6 – Porta d'ingresso

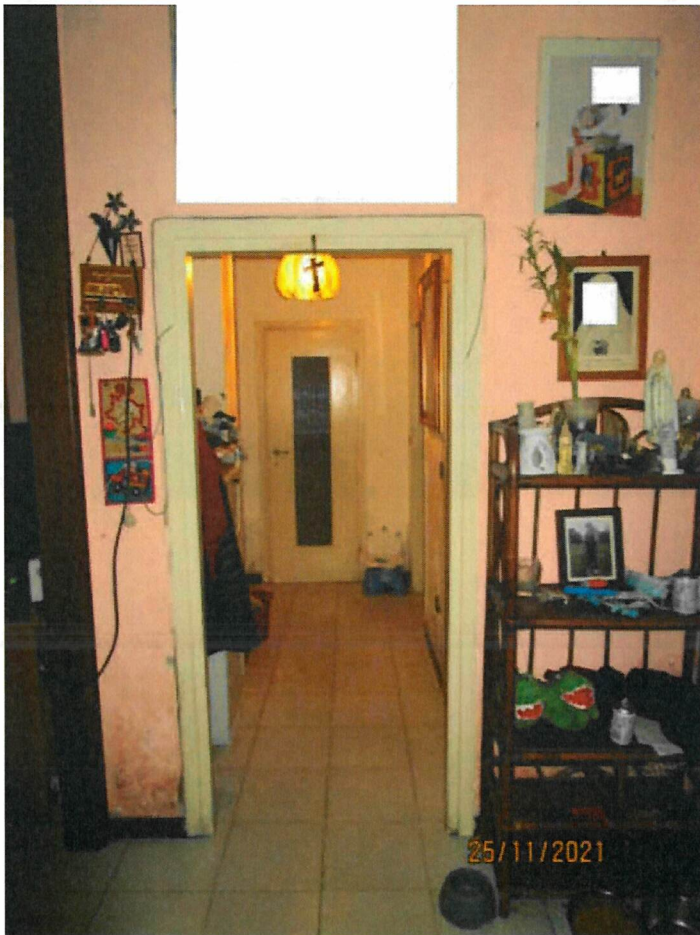






Foto 9 – Vista del locale soggiorno verso l'ingresso







Foto 11 – Vista del locale soggiorno

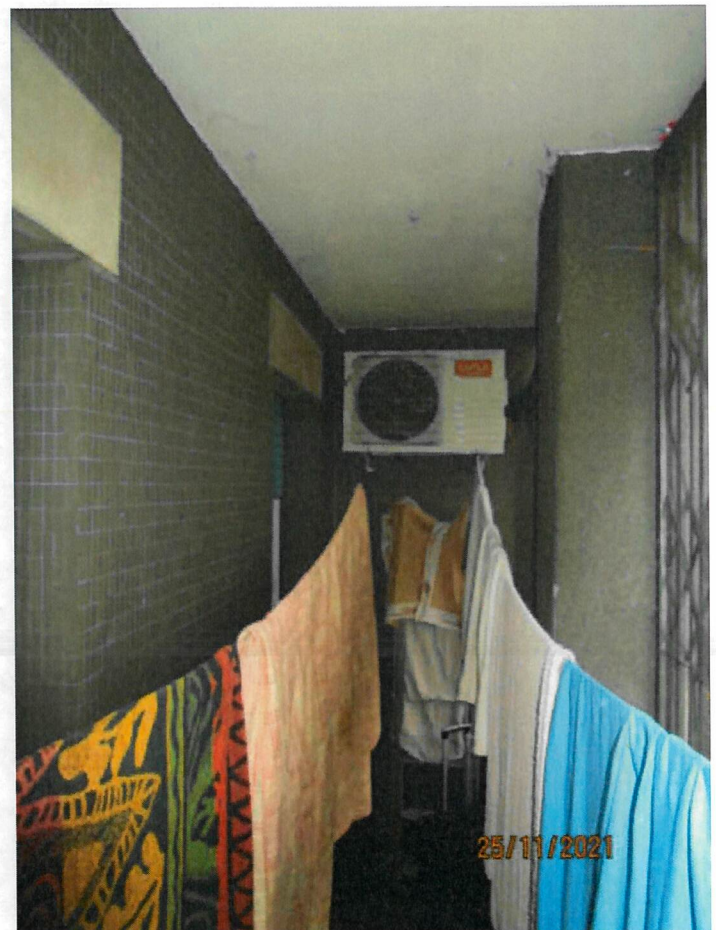
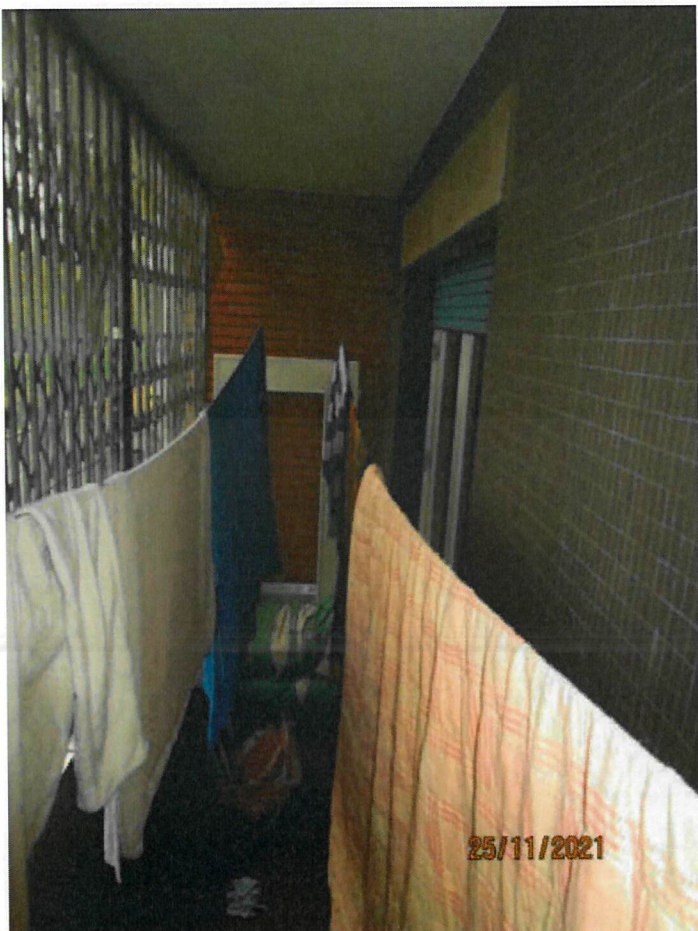






Foto 14 – Vista della cucina verso il soggiorno







Foto 20 – Camera da letto (camera 1)







Foto 22 – Camera da letto (camera 2)





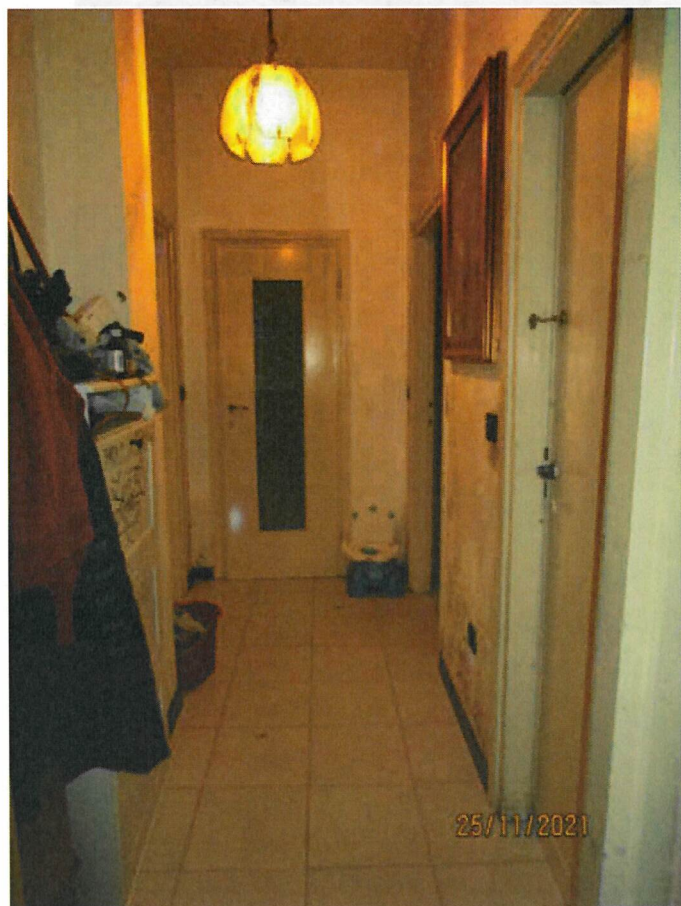


Foto 16/17 – Disimpegno di distribuzione dei locali

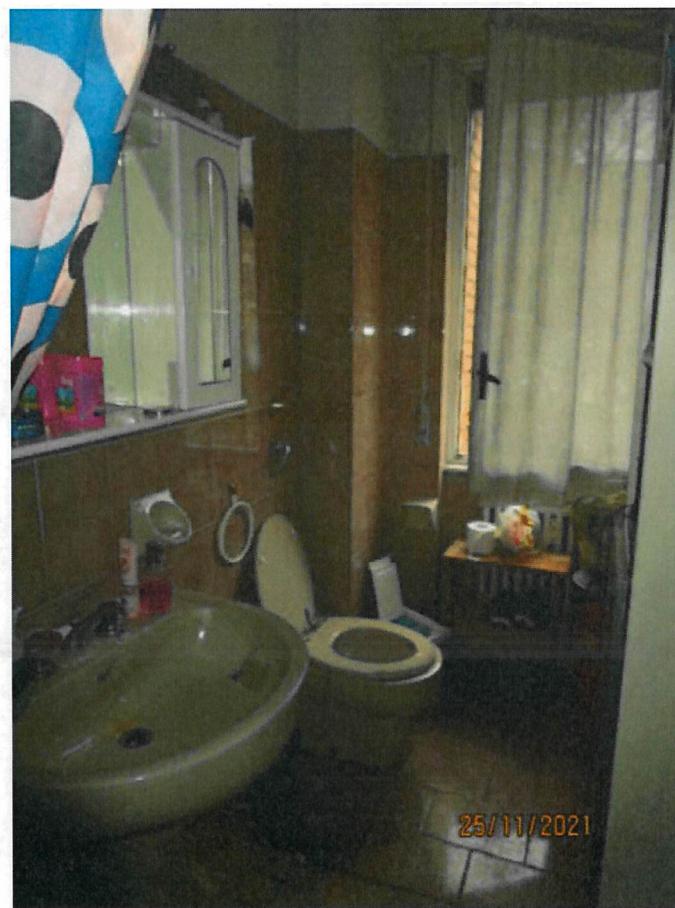






Foto 24 – Ripostiglio





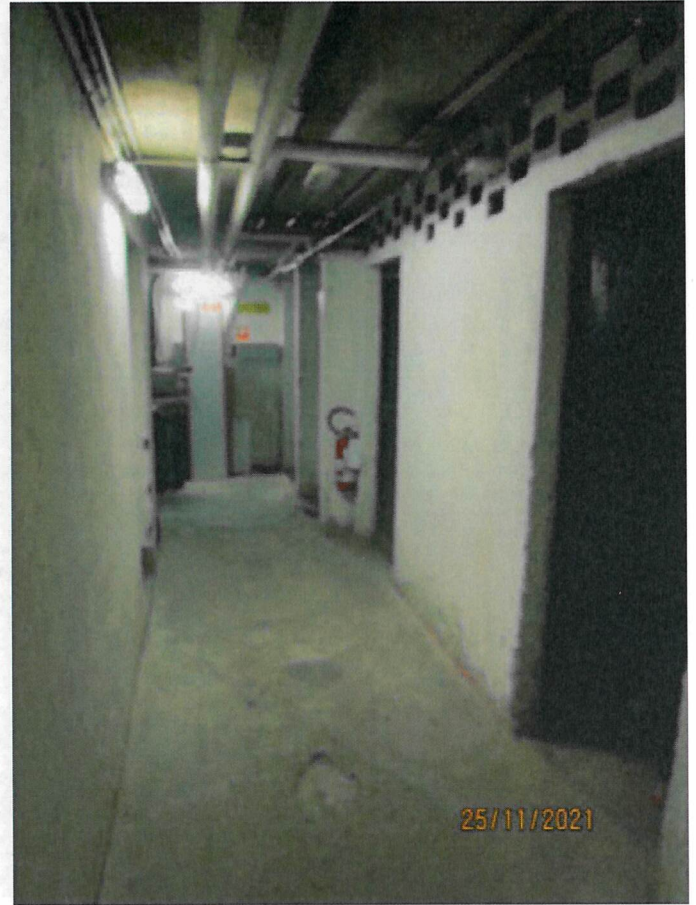
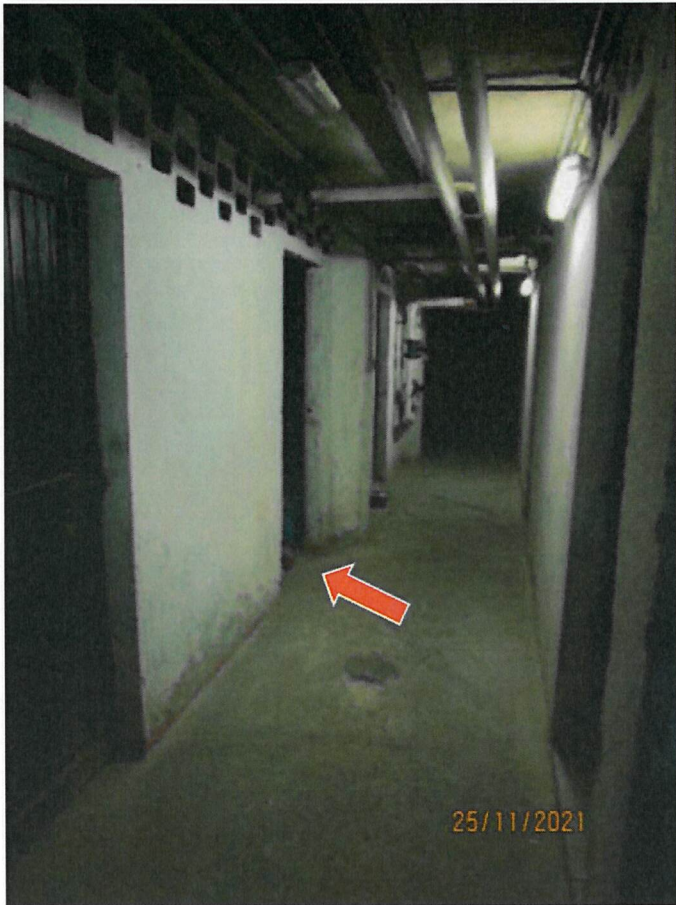


Foto 26/27 – Corridoio comune di distribuzione delle cantine

